

# Traces: Sarah

Solo Harp and Live-Electronics

*Commissioned by and dedicated to Melissa Achten*

Tom Baker - January 2019

Frog Peak Music

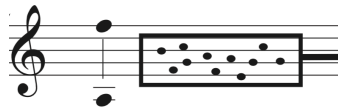
## Performance Notes:

- The harp should be amplified (separate from processing) so that it can be played extremely quietly but still be audible.
- Harmonics are played as written, not sounding.
- All tremolos are one string without enharmonics.
- Let vibrate except where noted.

## Symbols:



– with a soft felt tympani mallet, hit harp soundboard through the center soundhole and let vibrate



– lightly touch strings with pads of fingers in range requested, and pull off fingers to make very quiet pitched sounds

## Electronics:

- The electronic part of *Traces: Sarah* can be realized in 2 versions:
  - 1) Fixed Media (visit the website below for a WAV file to act as fixed media for the piece). In this version the electronic sounds (breath, link, drone, and chimes) are all fixed.
  - 2) Live Electronics (visit the website below for a MAX8 project). In this version, the chimes will be triggered by the harp part (using a separate microphone for audio processing).
- Link to max patch or fixed-media file: [https://www.tombakermusic.com/traces\\_sarah](https://www.tombakermusic.com/traces_sarah)

## Program Notes:

*Traces: Sarah* is a meditation on loss, grief, and memory. It is a search for what remains in the absence of known things, real things, loved things. It began as an incantation to give voice to the inaudible and form to the imperceptible. It has become a trace, a remnant, that seems to be evolving into a requiem for things lost. *Traces: Sarah* was commissioned by and is dedicated to Melissa Achten.

# TRACES: SARAH

Commissioned by and dedicated to Melissa Achten

Tom Baker  
January 2019

The score is divided into three systems, each with a Harp part and a Fixed Media Electronics part. The Harp part is written in treble clef with a key signature of one flat (Bb) and a common time signature. The Fixed Media Electronics part is represented by a single staff with a play button icon.

**System 1 (0:00 - 0:30):** The Harp part begins with the instruction "calm and unhurried". The key signature is Bb, C, D, Eb, E, F, G, A, Bb. The dynamics are marked *mp*. A play button icon is present in the Fixed Media Electronics staff.

**System 2 (0:35 - 1:00):** The Harp part starts at 0:35. The key signature changes to Bb, C, D, Eb, E, F, G, A, Bb. The dynamics are marked *pp*. There are two boxed musical phrases: one from 0:40 to 0:50 and another from 0:55 to 1:00. A play button icon is present in the Fixed Media Electronics staff.

**System 3 (1:05 - 1:30):** The Harp part starts at 1:05. There are two boxed musical phrases: one from 1:10 to 1:20 and another from 1:25 to 1:30. The Fixed Media Electronics part includes a "Breath" section with a play button icon and a series of rhythmic pulses. A play button icon is present in the Fixed Media Electronics staff.

1.35 1.40 1.45 1.50 1.55 2.00

Hp.

FM. Elec.

2.05 2.10 2.15 2.20 2.25 2.30

Hp.

FM. Elec.

2.35 2.40 2.45 2.50 2.55 3.00

Hp.

FM. Elec.

*mp*

3.05 3.10 3.15 3.20 3.25 3.30

Hp.

FM. Elec.

3.35 3.40 3.45 3.50 3.55 4.00

Hp.

FM. Elec.

4.05 4.10 4.15 4.20 4.25 4.30

Hp.

FM. Elec.

Link

Chimes ->

4.35 4.40 4.45 4.50 4.55 5.00

Hp. *ppp* *pp*

C# D#  
F# A#

FM. Elec.

with growing tension

Chimes Off

5.05 5.10 5.15 5.20 5.25 5.30

Hp. *pp* *p* *pp*

Bb C# D#  
Eb

C#  
Eb

C# B#  
A# F#

FM. Elec.

5.35 5.40 5.45 5.50 5.55 6.00

Hp. *p* *pp* *pp*

F# G#

Eb

Eb

8va

8va

FM. Elec.

6.05

6.10

6.15

6.20

6.25

6.30

Hp. *p* *pp* B $\flat$  C $\flat$  E $\flat$

FM. Elec.

6.35

6.40

6.45

6.50

6.55

7.00

Hp. *pp* *p* B $\sharp$  E $\sharp$  C $\sharp$  C $\sharp$  F $\sharp$  G $\sharp$

FM. Elec.

7.05

7.10

7.15

7.20

7.25

7.30

Chimes ->

Chimes Off

Hp. *p* *mf* *mf* C $\sharp$  D $\sharp$  F $\sharp$  A $\sharp$  C $\sharp$  D $\sharp$  E $\flat$  F $\sharp$

FM. Elec.

Slide (rub) fingers  
on soundboard (both hands)  
from shoulder to base

7.35

7.40

7.45

7.50

7.55

8.00

*p*

8.05

8.10

8.15

8.20

8.25

8.30

8.35

8.40

8.45

8.50

8.55

9.00

Chimes ->

Breath

Drone

Hp.

FM. Elec.

Hp.

FM. Elec.

Hp.

FM. Elec.



9.05 9.10 9.15 9.20 9.25 9.30

Hp. *p* *pp* 8va *p*

FM. Elec.

9.35 9.40 9.45 9.50 9.55 10.00

Hp. *p* *mp* 8va *p*

FM. Elec.

10.05 10.10 10.15 10.20 10.25 10.30

Hp. *p* 8va

FM. Elec.

Chimes Off

10.35 10.40 10.45 10.50 10.55 11.00

Hp.

G $\flat$  E $\flat$  C $\sharp$  E $\sharp$  G $\sharp$

FM. Elec.

*pp* *p*

11.05 11.10 11.15 11.20 11.25 11.30

Hp.

*pp* A $\sharp$  B $\flat$  C $\flat$  E $\flat$  *p*

FM. Elec.

11.35 11.40 11.45 11.50 11.55 12.00

Hp.

*pp* *ppp* *ppp*

FM. Elec.

